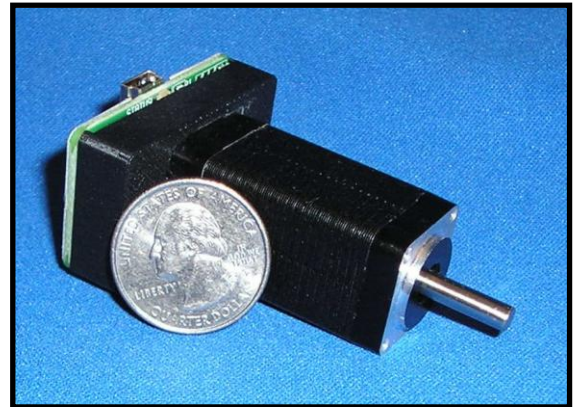


## USB-Twister II System

### System Features

- Small Low cost, rotary stepper motor control system  
(\$ 285.00 single piece price)
- Powered and controlled from a standard USB port
- Small motor size of 20mm square (size 8)
- Torque force of about 2.0 N-cm (~3 in-oz)
- Continuous and absolute rotary motions
- Position resolution of 1.8 degrees (200 step/rev)
- USB Hot pluggable with Auto-detection
- Multi-motor control with self-powered USB Hubs
- Power efficient, power used only when moving
- Selectable step speeds and jog intervals
- PC Windows interface for easy motion control  
Includes LabView Drivers and C++ DLL files



The USB-Twister II is a unique, relatively low cost, stepper motor control system for simple rotary motion. It is powered and controlled solely by a standard USB port. This system provides the method of rotary motion control unmatched in size, simplicity, and ease of use.

The USB-Twister includes Windows based application software that runs on any standard PC with Windows-XP/Vista and a USB port. This user interface provides for velocity (step speed), and position (step) control. All positioning movements are relative to a Zero (user selectable) position.

### Picard Industries

4960 Quaker Hill Road, Albion, New York 14411

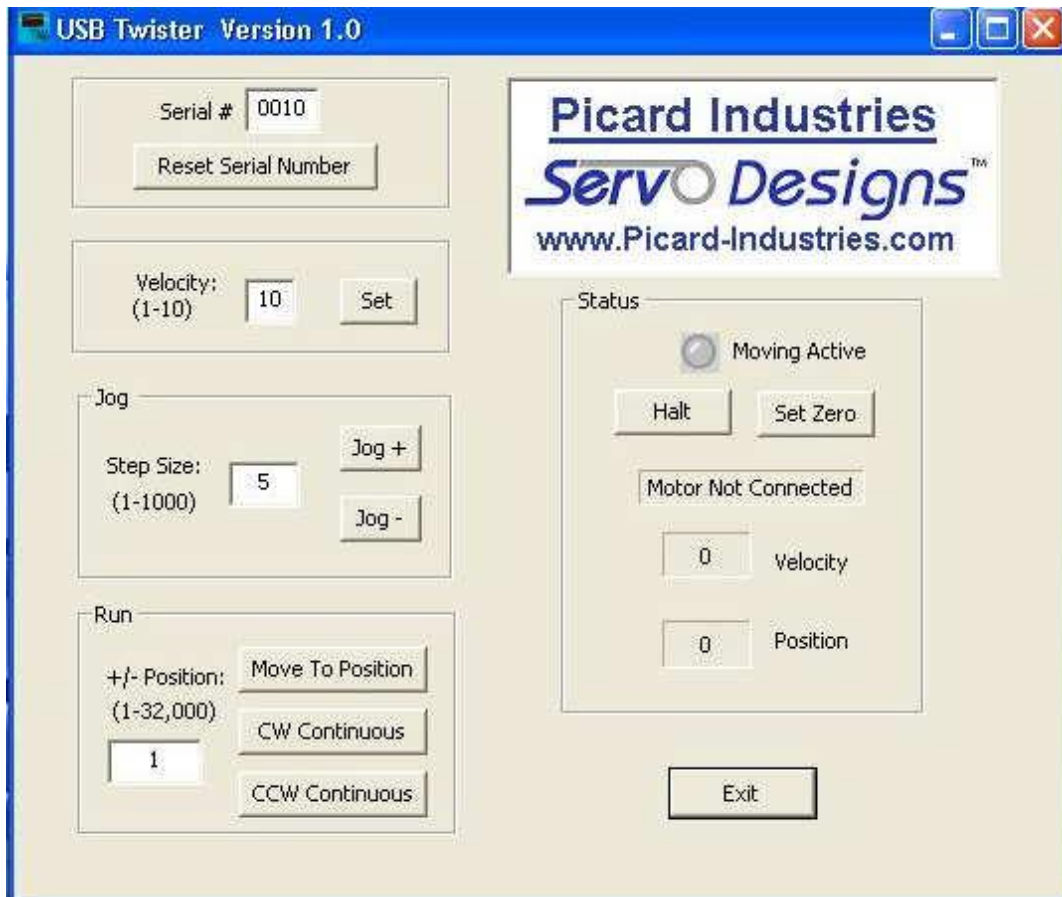
(585) 589-0358

[info@Picard-Industries.com](mailto:info@Picard-Industries.com)

[www.Picard-Industries.com](http://www.Picard-Industries.com)

## USB Twister II User Interface

Below is a screen shot of the Windows control software that is provided with the USB-Twister II device. This software comes on a CD and will auto install upon insertion into any standard PC with a Windows-XP/VISTA operating system. After the software has been successfully loaded, simply insert the motor's serial number and attach the USB-Twister to a standard USB port. The software will auto-detect the connection and allow you to begin controlling the position of the motor. Multiple motors can be connected by using externally powered USB hubs. Open multiple applications of this software and assign each with the serial numbers of the USB-Twister motors. LabView examples and DLL files will allow the user to automate this control functionality directly into their own custom application.



## USB-Twister II Dimensions

