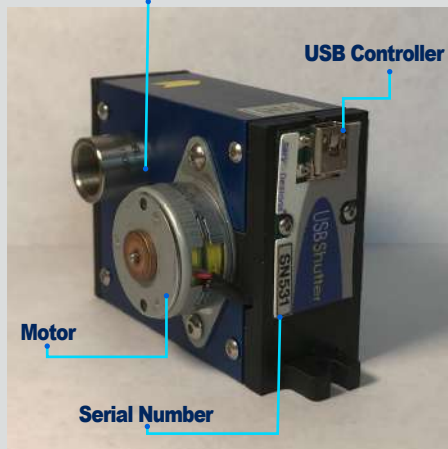


# USB Fiber Shutter

ThorLabs SM05 Thread (both sides)



Optional ThorLabs Fiber Adapters (AD1109F)



## USB Fiber Shutter Features

The USB Fiber Shutter is designed to couple a fiber optic cable through the USB-Shutter in a light-tight box.

- USB powered and controlled shutter
- Draws power from a standard USB port
- Auto closing shutter (return spring) if power or communications is lost
- Quiet stepper motor operation (no clunk) to open and close a simple shutter paddle
- USB Hot pluggable with Auto-detection
- Mounts provided for optical tables or posts
- Threaded SM05 mounts on both sides of the box
- Easy to use Windows (XP and higher) based User Interface software included
- LabView and C++ example software with a DLL file provided for ease of automation
- One meter USB cable included

**(\$ 385.00 single piece price)**

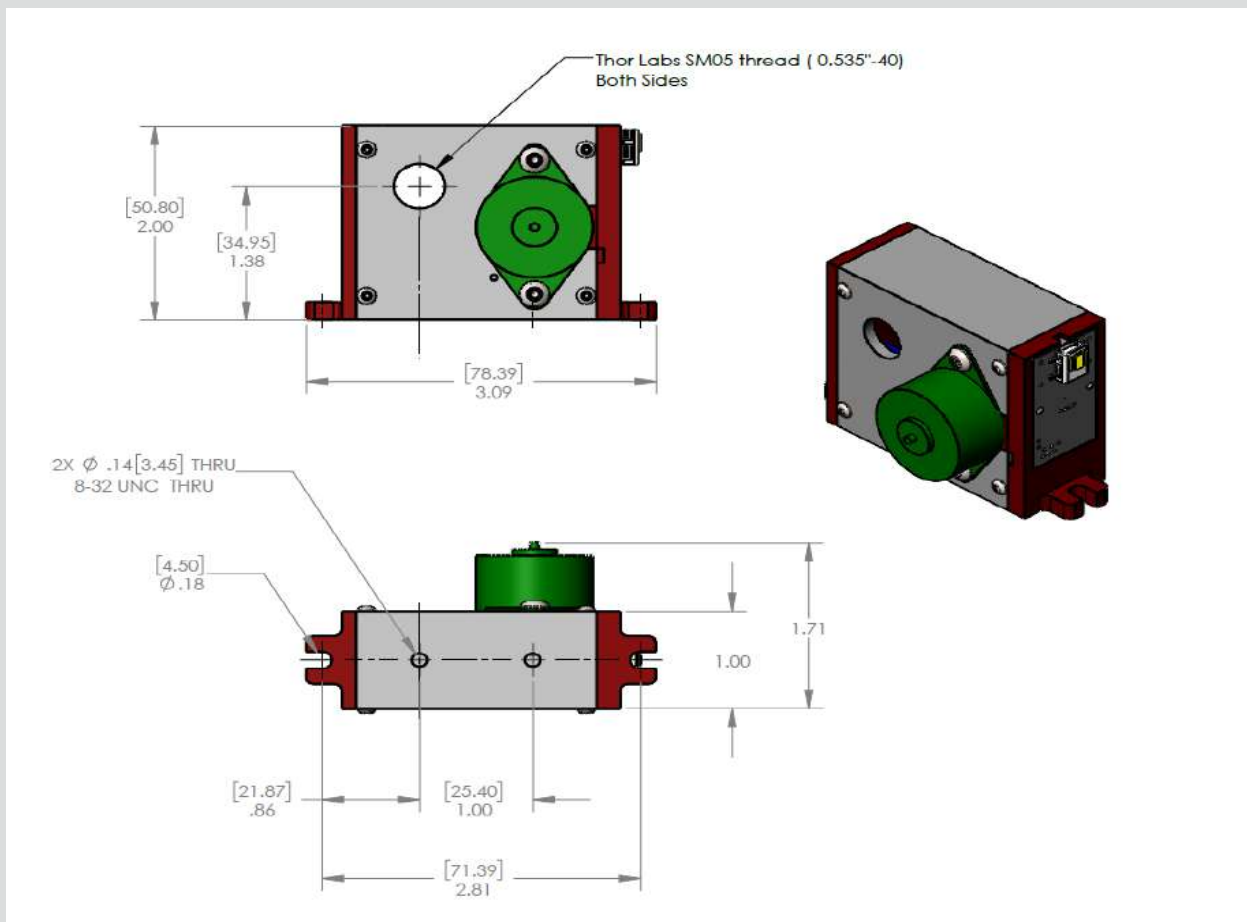
**Picard Industries**

4960 Quaker Hill Road, Albion, NY 14411

(585) 589-0358

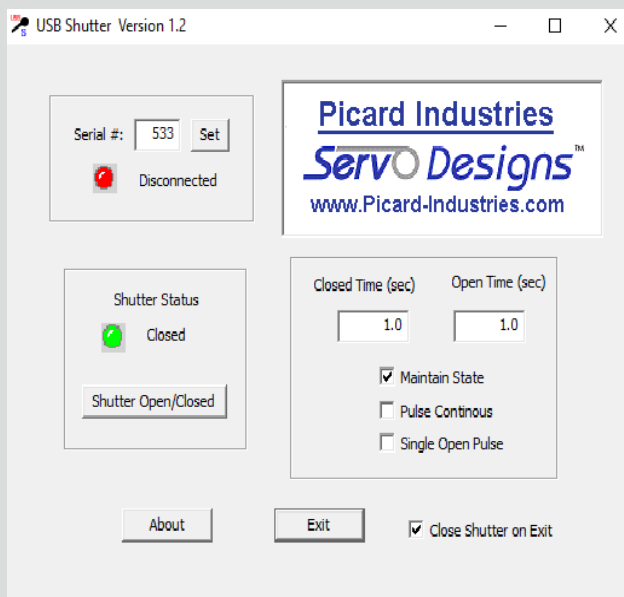
[www.Picard-Industries.com](http://www.Picard-Industries.com)

# Mechanical Layout



## Software Interface

## Description



We provide this Windows example program for timed control of an individual **USB-Fiber Shutter**.

Each shutter is identified by its serial number located on the shutter. Enter this number and click Set to connect. Status (red/green) indicators are used to show whether the shutter is properly connected to the USB port and whether it is **opened** or **closed**.

The shutter button is clicked to toggle the shutter state. Timed exposures are accomplished by entering time values and selecting a Pulse mode. To the left is a screen-shot of the user interface. Source code for this program and LabView examples are also provided as a tutorial for using our DLL file that controls the **shutter**.